

Feature Focus

Feature Focus

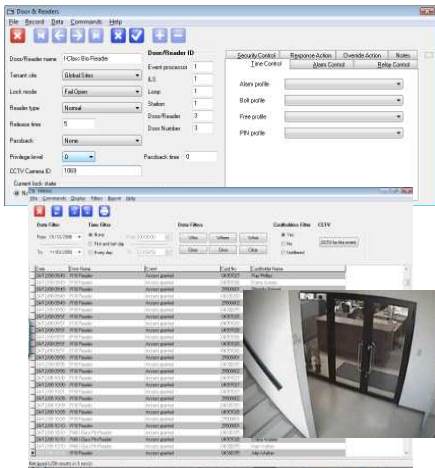
RELATED PART NO'S

xPLAN Software
All reader types
All controller types

DESCRIPTION

PLAN System CCTV / Digital Recorder Integration

Overview of Digital Recorder, Matrix and general CCTV integration options



PLAN System CCTV Integration options: Through the use of the PLAN Virtual Control Room Software a PLAN Access Control System can provide a cost-effective solution for applications that require the graphical display of alarm events and integration of these events with a CCTV matrix or Digital Video Recorder.

Two levels of integration available.

Stage 1 integration allows the system to be configured to trigger an automated response from the CCTV system when an alarm incident or 'flagged' event occurs. Using the Virtual Control Room GUI, operators can be presented with 'live' or pre-alarm video on the graphical alarm display screen, or on the primary CCTV display.

Using the Virtual Control Room software, operators can configure annotated maps of the site for alarm display purposes. Once created, site maps can be populated with various equipment Icons (such as CCTV cameras) for alarm enunciation. Activation of on screen icons (mouse click or touch screen) allow the operator to control external devices such as calling up an individual CCTV image, operating Intercoms etc. In this manner a 'Virtual' security console is created on screen, allowing intuitive control over remotely located equipment, whilst at the same time, graphical indication of the current status of alarm sources.

Stage 2 integration embeds the process of access control system alarm/event reporting with the archived video footage.

Users can create historical transaction reports in the normal way and then by clicking on the "Get CCTV" button play related video clips directly from the history search screen (as opposed to duplicating the same search criteria in the DVR system software).

Directly accessing the video management system from the familiar search environment of the PLAN software provides the opportunity to proactively address suspected unauthorised access as well as providing supporting evidence to the accuracy of the reported information.

CONTACT DETAILS

ACS Ltd
20-26 High Street
Greenhithe
Kent
DA9 9NN
United Kingdom
Tel: +44 (0) 1322 370777
Fax +44 (0) 1322 370076
www.xplan.com

CONTACT

Ray Phillips
rphillips@xplan.com



...ahead in access control